

Comment: Myc. digest

Method: RDE1000

Mode: Reflector

Accelerating Voltage: 20000

Grid Voltage: 70.000 %

Guide Wire Voltage: 0.010 %

Delay: 200 ON

Laser : 1180

Scans Averaged: 244

Pressure: 1.06e-07

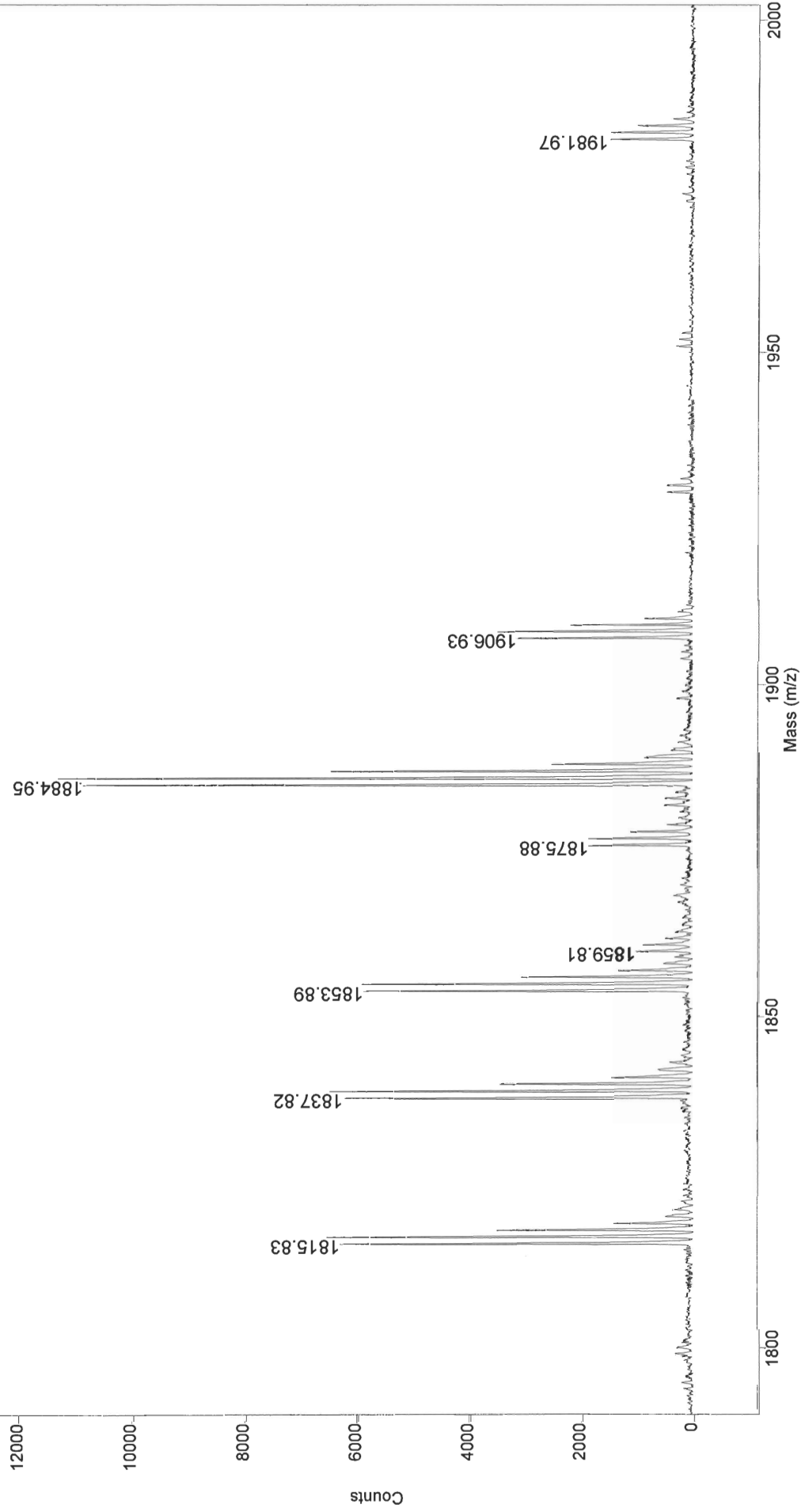
Low Mass Gate: 700.0

Mirror Ratio: 1.100

PSD Mirror Ratio: 1.0000

Timed Ion Selector: 1523.0 OFF

Negative Ions: OFF



Comment: Myo. digest

Method: RDE1000

Mode: Reflector

Accelerating Voltage: 20000

Grid Voltage: 70.000 %

Guide Wire Voltage: 0.010 %

Delay: 200 ON

Laser : 1180

Scans Averaged: 244

Pressure: 1.06e-07

Low Mass Gate: 700.0

Mirror Ratio: 1.100

PSD Mirror Ratio: 1.0000

Timed Ion Selector: 1523.0 OFF

Negative Ions: OFF